

Welcome Back!

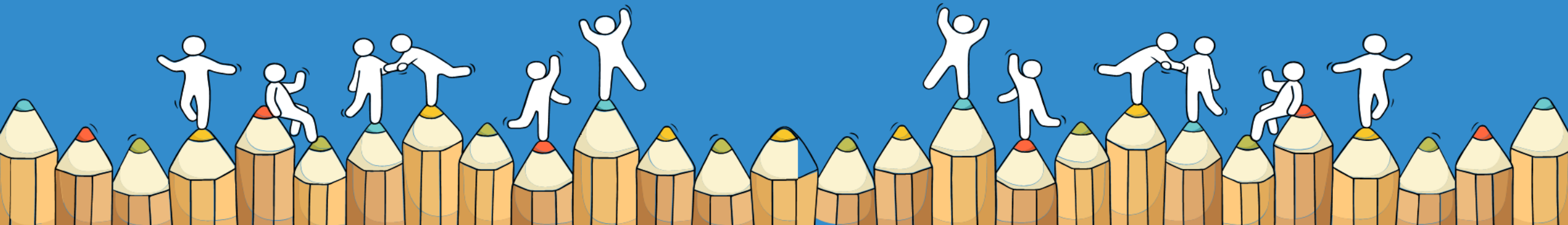
Serangoon Garden Secondary School
Class of 2022



Acknowledgement and Appreciation

Thank you to:

- 😊 All parents / guardians who have supported their children / wards and partnering the school to bring out the best in them.
- 😊 To all teachers who have guided our 2022 4N cohort by laying a strong foundation at the lower secondary level and helping them in their journey towards the national examination.



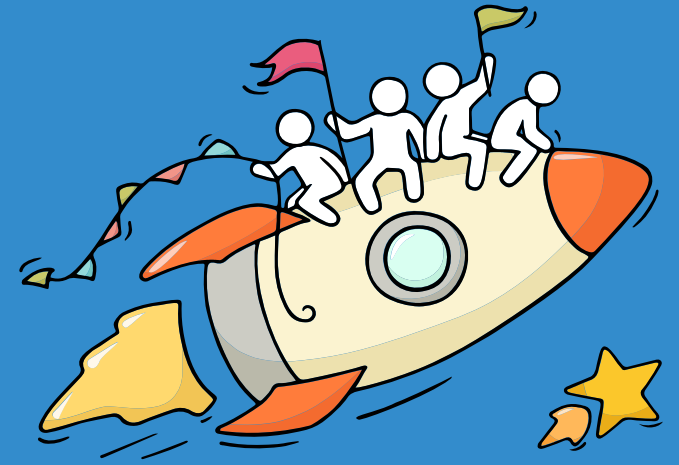
Celebrate Efforts

The N-Level is a culmination of years of hard work and perseverance.

Let's celebrate our efforts regardless of the results.

Let's mark the end of the academic year by reflecting together on all our previous successes in school and the challenges we have overcome!

Remember that everyone's learning journey is different but we can each have a fulfilling outcome!



REALIZE THAT YOU
ARE NOT ALONE,
THAT WE ARE IN THIS
TOGETHER AND MOST
IMPORTANTLY THAT
THERE IS HOPE.

Deepika Padukone



No matter the circumstances, there is always a way forward.

Stop

- Stop any unhelpful thoughts or actions that would make you more upset.
- Inhale deeply and exhale slowly using 10 counts as you relax your muscles. Acknowledge your emotions.

Think

- Think through the different options that are available for you. Keep things in perspective.
- Remember that the N-Level is just one part of your life journey and not the destination.

Do

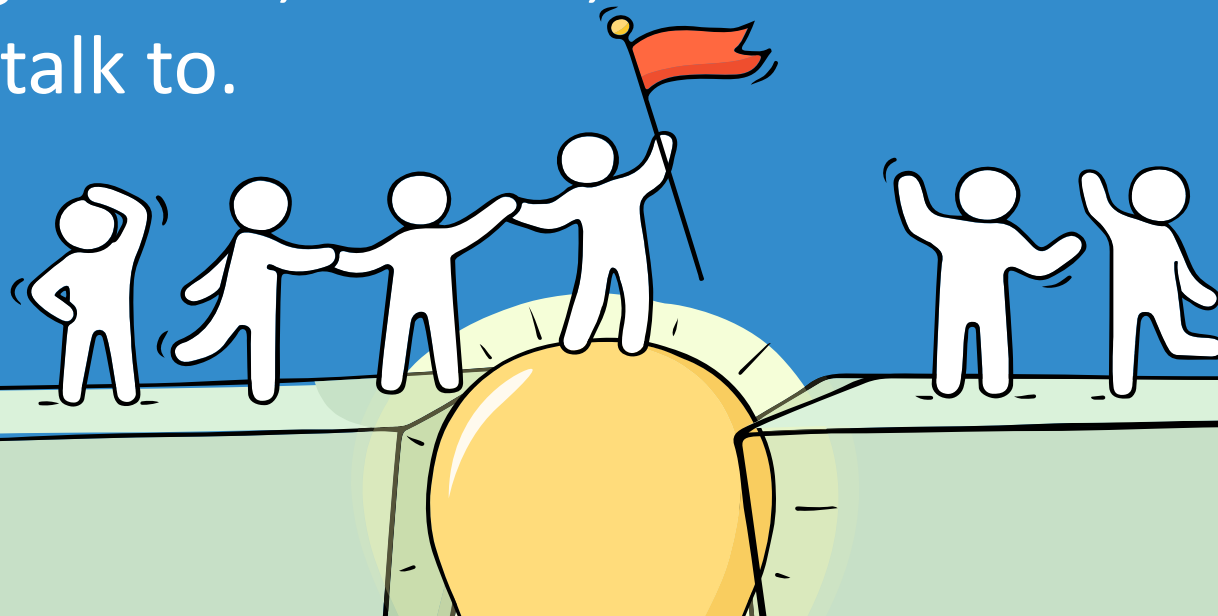
- Approach a trusted adult and seek his/her help. Have a conversation with this person about what would be best for you.
- Make a decision based on your options and take action.

When you receive your results, you may feel overwhelmed by emotions.

Managing these emotions well will allow you to stay calm and make rational decisions.

Reaching out for help is a sign of strength, not weakness.

If you have any concerns or are not coping, do reach out to someone you trust and speak with them. It could be a parent/guardian, teacher, School Counsellor or a friend that you can talk to.



Having difficult emotions during a stressful and uncertain period is normal.

Keep a lookout for some of these signs in your peers or yourself.

D
I
S
T
R
E
S
S

Deliberately avoiding others

Increased irritability, restlessness, agitation, stress and anxiety

Sending or posting moody messages on social media

Talking about death or dying

Reacting differently or gradually losing interest in things they used to like

Eating more than usual or having a much reduced appetite

Sleep pattern changes with difficulty falling asleep or oversleeping

Slowing down of energy levels

If you notice any of these signs in yourself or your friends, **have a chat with your school counsellor or teacher**

Or contact SOS 24-hour hotline at **1800-221-4444**

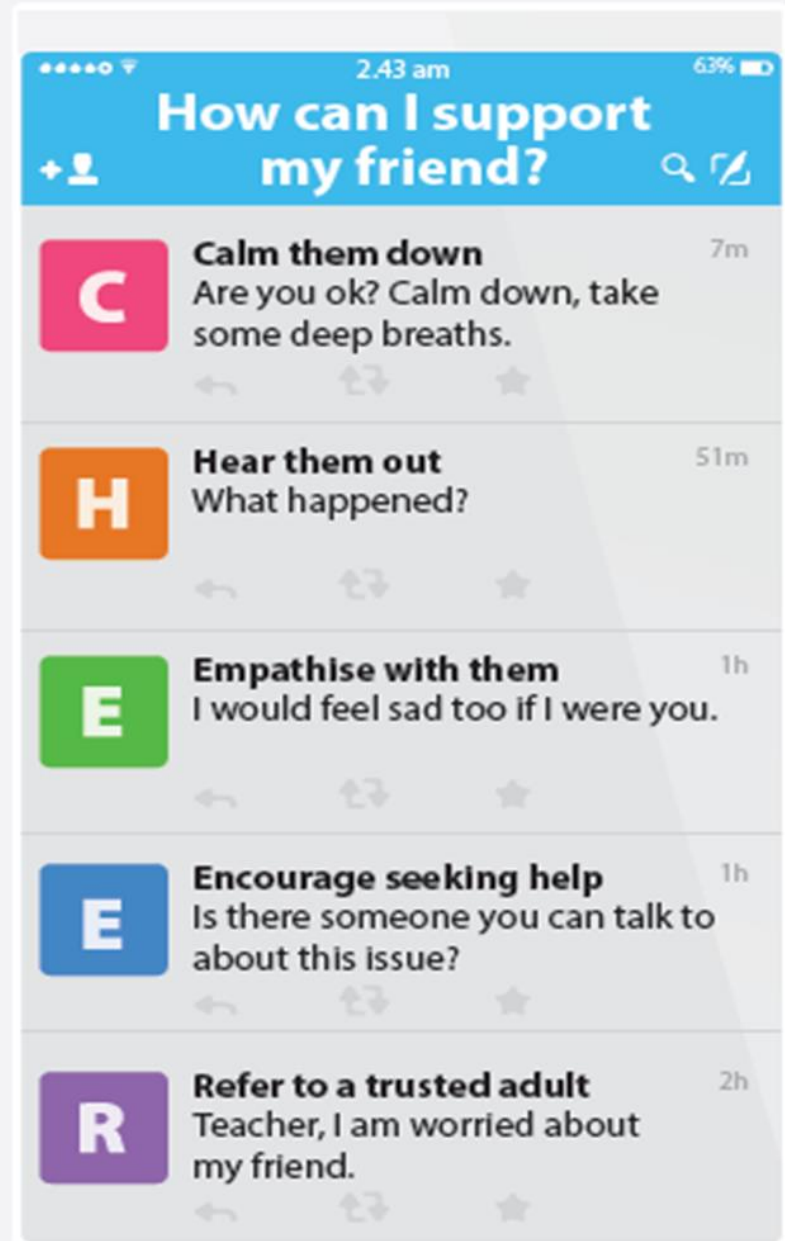


Supporting Your Friend

We may each experience different emotions upon receiving the results. You can share your friends' joy by congratulating them or give words of encouragement to friends who may be disappointed with their results.



Keep a lookout for your friends in distress. You can support them in the following ways:



Help is readily available for you.

There are other hotlines and chats available if you are more comfortable seeking help using these platforms.



SOS

SOS provides round the clock emotional support for those in distress, thinking of suicide or affected by suicide. This service is manned by trained volunteers.

Call: **1-767 or 1800-221-444**
(24-hour helpline)

There are also alternative avenues for emotional support through email and text messaging.

Email: **pat@sos.org.sg**
(Response within 48 hours)

SOS Care Text: **www.sos.org.sg**
(6pm – 6am on Mon to Thu and 6pm to 11:59pm on Fri)

Community Health Assessment Team (CHAT)

If you experience prolonged difficulties, CHAT provides personalised and confidential mental health checks and face-to-face consultation for youth aged 16 to 30. To speak with a youth support worker, you can:

Visit: **CHAT Hub at *SCAPE, #05-05** or
Call: **6493 6500/ 6501** or
Email: **CHAT@mentalhealth.sg**

Help is readily available for you.

There are other hotlines and chats available if you are more comfortable seeking help using these platforms.

eC2

eC2 is an e-Counselling Centre where you can talk to a trained counsellor about the issues you are facing, right where you are.

Youths may chat with a counsellor online at: www.ec2.sg

Monday – Friday
(Excluding Public Holidays): 10am – 12pm & 2pm – 5pm

TOUCHline

TOUCHline is a helpline to provide youths with emotional support and practical advice.

Call: **1800 3772252**

Monday – Friday
(Excluding Public Holidays): 9am – 6pm

mindline.sg

mindline.sg is an online platform that provides tools, tips and resources to help you manage your health and well-being. Explore and find out how you can improve your mental well-being and support your friends too.

Find out more: www.mindline.sg



Thinking About Your Next Step?



Who am I?

Where do I want to go?

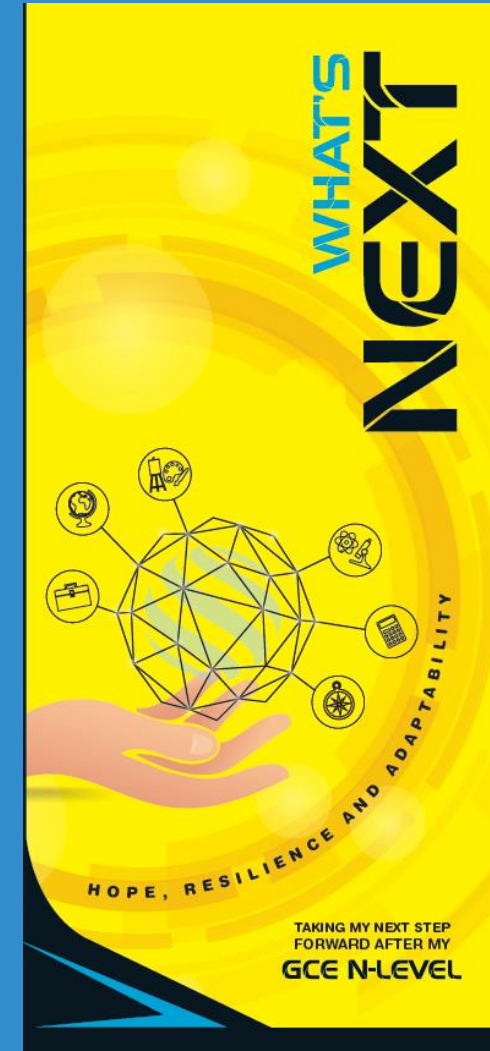
How do I get there?

Resources to help you make informed decisions

Resources	Link	Description
Skillsfuture Portal	https://go.gov.sg/mySFsec	A one-stop portal that empowers us to explore education and career pathways!
What's Next publication	https://go.gov.sg/whats-next-nlevel	Sharing on what are the next step forward after the NLevel
On my way website	https://go.gov.sg/omw-moerrp2023	Get key info on jobs and industries that you aspire to enter, with quick FAQs on how to get there!



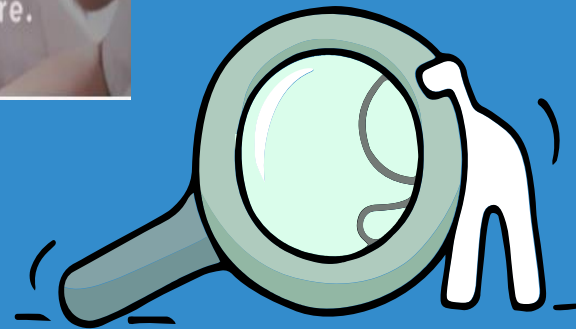
Photograb from *On My Way* website



Resources to help you make informed decisions

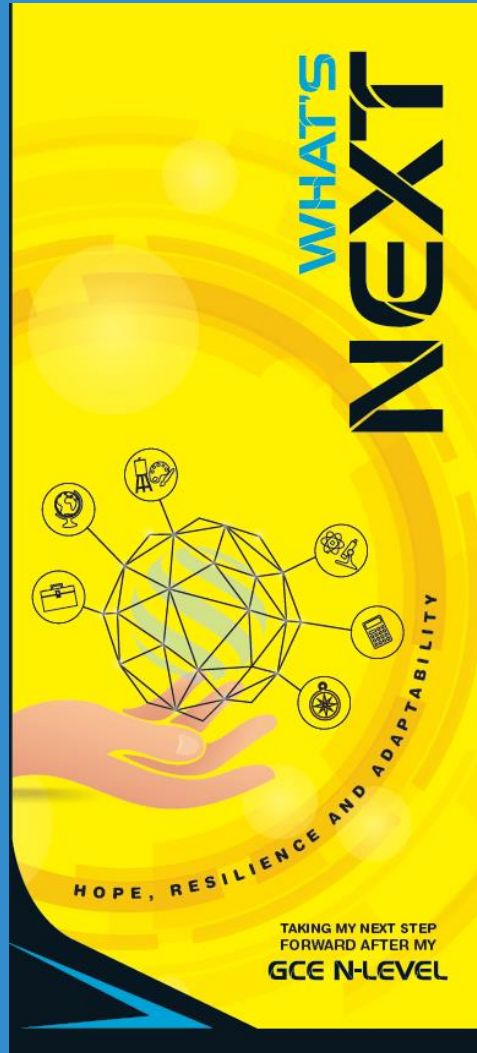


Where can we find more information?



<https://go.gov.sg/mySFsec> (SkillsFuture)

Resources to help you make informed decisions



Where can we find more information?



<https://go.gov.sg/whats-next-nlevel>



<https://go.gov.sg/whats-next-nlevel>



Unsure of what's next?

Explore different jobs and industries with **On My Way (OMW)**. Find out if your career goal and educational pathway match your interests, values and ambitions.

Get key info on **jobs and industries** that you aspire to enter, with quick FAQs on **how to get there!**



Peek into a **day in the life of professionals** from various fields with our video series.


Connect with schooling seniors, go on **learning journeys**, or tune in to our **industry panels**, we've got programmes planned from Nov 2022 to Feb 2023

Go to <https://go.gov.sg/omw-moerrp2023> and let's get you on your way!



<https://go.gov.sg/omw-moerrp2023>

KNOW IT ALL COPY URL TO SHARE





INVESTMENT BANKER

Investment Bankers sell securities and provide strategic advice to their clients. They advise clients on raising funds from the equity/debt capital markets and merger and acquisitions (M&A).

RESponsibilities

- Advise corporate clients on product offerings, private equity transactions, mergers and acquisitions, and valuations.
- Determine the **best strategy** and place to **raise debt or equity capital**.
- Prepare necessary documents to **protect the company and investor**.
- Ensure all **government regulations have been adhered to**.
- Perform financial modelling using valuation methods.

SKILLS NEEDED

 <p>HARD SKILLS</p> <ul style="list-style-type: none"> Financial Modelling (e.g. DCF, Public Comps, M&A Comps) Data Analytics Strong Mathematical and Numerical Skills 	 <p>SOFT SKILLS</p> <ul style="list-style-type: none"> Influencing and negotiation skills Innovative Problem Solving Customer Orientation Communication
---	---



Post-Secondary Education

Learn more about the admissions exercises and programmes

<https://moe.gov.sg/post-secondary/admissions>



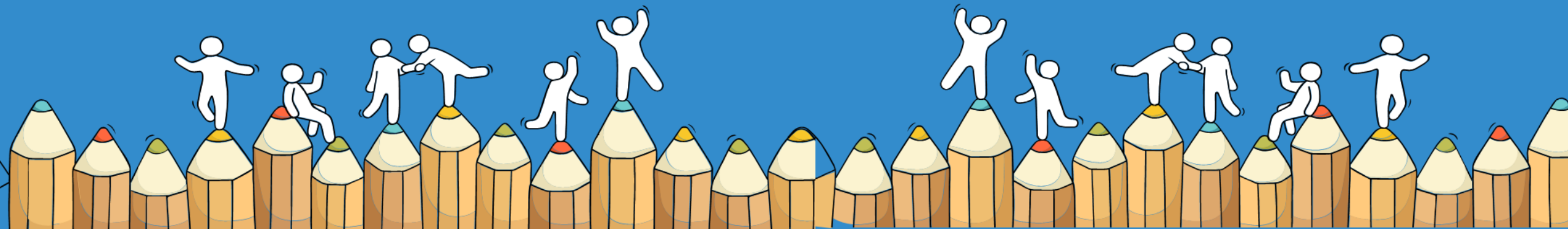
Learn more about the post-secondary education institutions

<https://moe.gov.sg/post-secondary/overview>

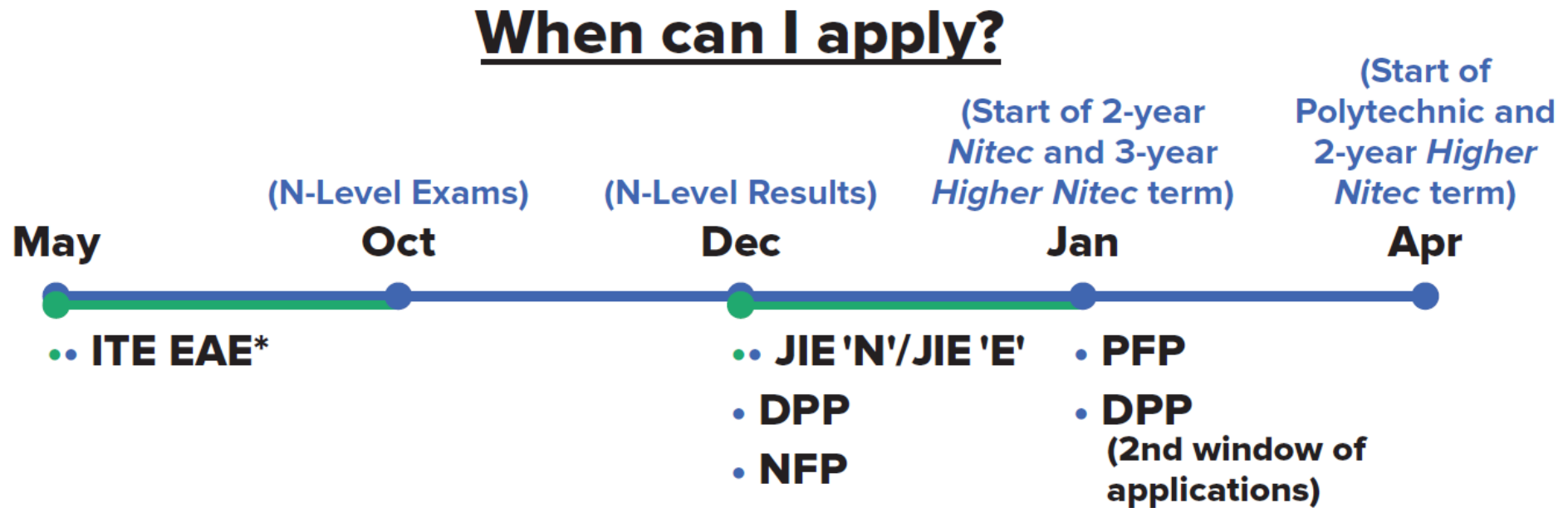


Admission Exercises

Things to note



Admissions Exercises Application Timeline



*Students can apply through these admission exercises before their examinations.

**Certain *Nitec* and *Higher Nitec* courses are available in traineeship mode. For more information on applying to these courses, you can visit <https://www.ite.edu.sg/admissions/traineeship>

^ There are eleven 3-year Higher Nitec courses available for AY2023.

Admissions Exercises for N-Level Students

Where am I now?

What can I apply for?

Where do I want to go?

N(T)-Level Student

ITE EAE*

JIE 'N'/JIE 'E'

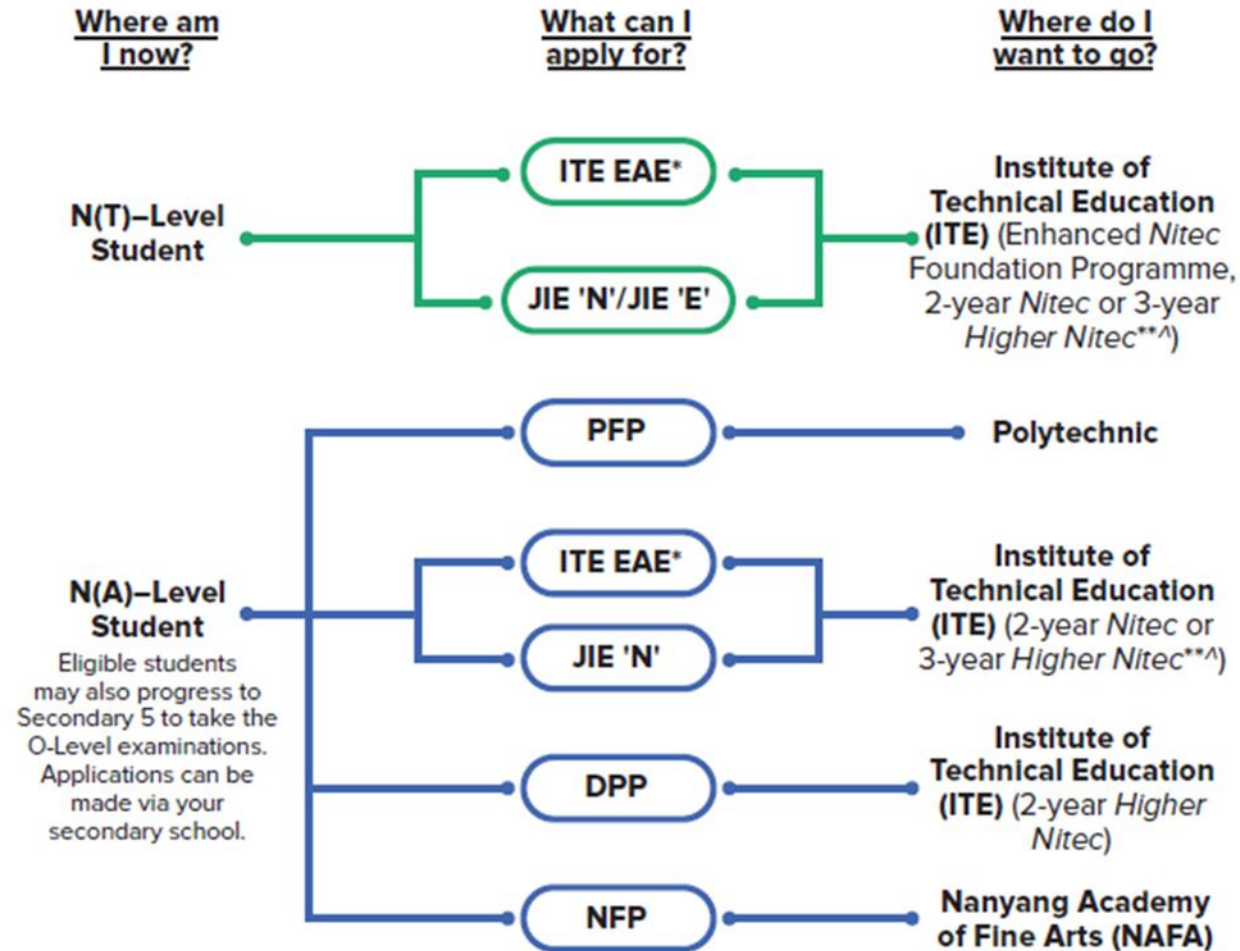
Institute of Technical Education (ITE) (Enhanced Nitec Foundation Programme, 2-year Nitec or 3-year Higher Nitec**^)

Multiple Education Pathways

“We will provide our students with a diversity of schools and education pathways, a diversity of skillsets and a diversity of perspectives and experiences.”

Mr Chan Chun Sing, Minister for Education (16 Aug 2021)

Admissions Exercises for N-Level Students



Multiple Education Pathways

“We will provide our students with a diversity of schools and education pathways, a diversity of skillsets and a diversity of perspectives and experiences.”

Mr Chan Chun Sing, Minister for Education (16 Aug 2021)





Details of Admission Exercises (for all N level students)



JIE 'N'/JIE 'E' – Joint Intake Exercise

The JIE 'N' is for 2-year *Nitec* or 3-year *Higher Nitec* courses offered by ITE.

The JIE 'E' is for GCE N(T) students to apply for the 3-year *Nitec* course with Enhanced *Nitec* Foundation Programme.



go.gov.sg/applyjie

Details of Admission Exercises (Open to N(A) students)



DPP – Direct-Entry-Scheme to Polytechnic Programme

DPP allows Secondary 4N(A) students to be admitted directly into a two-year *Higher Nitec* programme at ITE without having to sit for the O-Level examinations or undergo a *Nitec* programme.

DPP students who successfully complete their *Higher Nitec* courses at ITE and attain the required qualifying Grade Point Average (GPA) scores are guaranteed a place in a polytechnic diploma course mapped to their *Higher Nitec* course.



go.gov.sg/applydpp



NFP – NAFA Foundation Programme

The NFP is a full-time one-year practice-based programme targeted at N(A) students, to prepare them for the successful enrolment and completion of a diploma programme at NAFA. Students enrolled into the NFP are offered provisional places in their pre-selected diploma courses, and can progress to the first year of the course upon the successful completion of the NFP.



go.gov.sg/applynafafp



PFP – Polytechnic Foundation Programme

PFP is a one-year programme that offers a practice-oriented curriculum taught by polytechnic lecturers to better prepare polytechnic-bound N(A) students for entry into selected polytechnic diploma courses. PFP students are given provisional places in diploma programmes, subject to them passing all modules in the 1-year PFP.



go.gov.sg/pfp

Speak to an ECG Counsellor

- Making informed decisions is important for successful transition from school to further education.
- Speak with your teachers and ECG Counsellor (stationed in Comp Lab 2 this afternoon) besides your parents, on the possible pathways.
- MOE ECG Centre offers online or phone counselling services to GCE N-Level students, from 9.00am to 5.00pm from Monday, 12 December 2022 to Saturday, 24 December 2022. Details on how to make an appointment can be found in the What's Next pamphlet distributed to you or below:

Make an online or phone counselling appointment with the ECG Centre @ MOE (Grange Road) through

<https://go.gov.sg/moe-ecg-centre>





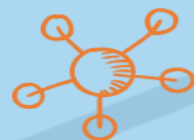
Information & Profiling



Educational
Opportunities



Counselling & Group
Guidance



Work Experiences



Progression Plans

Camilla Teo

Senior Education and Career
Guidance (ECG) Counsellor



Where to find her?

Counselling Room
Every Tuesday and Thursday



How to contact her?

Scan QR code
<https://go.gov.sg/camillateo>



<https://go.gov.sg/camillateo>



Email teo_hsia_poh@schools.gov.sg



Ask teachers to refer you

JIE Application

1. Choose your courses wisely. Look at the cut-off points for Higher Nitec / Nitec courses available in the JIE booklet distributed to you.
2. Candidates who wish to apply for courses offered by the Institute of Technical Education (ITE) can submit their applications online via the ITE application portal (<https://www.ite.edu.sg/apply-for-ITE-courses>), between **2.30pm on Monday, 19 December 2022 and 5.00pm on Thursday, 22 December 2022**. Hard copy application forms will also be available at the Customer & Visitor Centres at the three ITE Colleges. Applicants who wish to collect a hard copy application from the Customer & Visitor Centres should book an appointment first by contacting the respective colleges via the email addresses or phone numbers provided at <https://www.ite.edu.sg/who-weare/get-in-touch>.
3. For courses offered under Aptitude-Based Admissions, candidates may check the interview details online via the ITE application portal from **2.00pm on Friday, 23 December 2022**.



Release of JIE results

1. The ITE posting results will be released at **9.00am on Friday, 30 December 2022**. Candidates may check the posting results online via the ITE application portal.
2. Candidates who receive an ITE offer should log on to the ITE application portal between **9.00am on Friday, 30 December 2022 and 11.59pm on Wednesday, 4 January 2023** to accept or reject the offer.



DPP (Application)

1. The Direct-Entry-Scheme to Polytechnic Programme (DPP) prepares candidates for progression into selected polytechnic diploma courses via a two-year Higher Nitec course at ITE. Under the DPP, candidates who successfully complete their Higher Nitec course and attain the required minimum qualifying Higher Nitec Grade Point Average are guaranteed a place in a polytechnic diploma course mapped to their Higher Nitec course. School candidates eligible for the DPP will receive a copy of Form N from their secondary schools, inviting them to apply for the DPP.
2. Applications for the DPP can be submitted online via the ITE application portal between **2.30pm on Monday, 19 December 2022 and 5.00pm on Thursday, 22 December 2022.**
3. For more information on the DPP, please visit this website:
(<https://www.ite.edu.sg/admissions/full-time-courses/higher-nitec-dpp>)



DPP (Results)

1. The DPP posting results will be released at **2.00pm on Friday, 23 December 2022**. Candidates may check the posting results online via the ITE application portal.
2. Candidates who receive a DPP offer should log on to the ITE application portal between **2.00pm on Friday, 23 December 2022 and 11.59pm on Wednesday, 28 December 2022** to accept or reject the DPP offer.



Polytechnic Foundation Programme (PFP)

1. The Polytechnic Foundation Programme (PFP) is a diploma-specific foundation programme conducted over two academic semesters at the polytechnics. It caters to candidates in the N(A) course who have decided to pursue a polytechnic education and meet the PFP eligibility requirements at the end of Secondary 4.
2. School candidates interested in applying for the PFP should first report to their secondary schools in 2023 to start their Secondary 5 year, while awaiting notification of eligibility and confirmation of a place in the PFP.
3. Applications for the PFP will open in January 2023, on the day of the GCE Ordinary-Level (O-Level) Examinations results release. Candidates eligible for the PFP will receive a copy of Form P on the same day, inviting them to apply for the PFP.
4. For more information on the PFP, please visit this website:
(<https://pfp.polytechnic.edu.sg/PFP/index.html>)



Appeal for review of results

1. The closing date for submission of appeal(s), including payment of appeal fees is **by Friday, 23 December 2022.**
2. Applications submitted after the closing date will not be considered.



Serangoon Garden Secondary School

Established in 1959

Perseverance. **R**espect. **I**ntegrity. **D**iligence. **E**mpathy

Key Dates for Jan 2023 Intake Exercise (Full-time Nitec Courses)

Key Activity	Period for 2-Year and 3-Year Nitec Courses, and 3-Year Higher Nitec courses	Remarks
1st Phase (Main Phase)		
Application	19 Dec 2022 (2.30pm) to 22 Dec 2022 (5pm)	Apply through the Internet at https://www.ite.edu.sg with NRIC / FIN and Date of Birth. You may also apply using SingPass.
Release of Results	30 Dec 2022 at 9am	Check results at https://istudent.ite.edu.sg with web ID and password
Acceptance of Course Offer Period	30 Dec 2022 to 4 Jan 2023	Accept course offer at https://istudent.ite.edu.sg with web ID and password
2nd Phase (Late Application/Appeal Phase)		
Application	30 Dec 2022 to 4 Jan 2023	Apply through the Internet at https://istudent.ite.edu.sg with NRIC / FIN and Date of Birth. You may also apply using SingPass.
Release of Results	11 Jan 2023 at 9am	Check results at https://istudent.ite.edu.sg with web ID and password
Acceptance of Course Offer Period	11 Jan 2023 to 13 Jan 2023	Accept course offer at https://istudent.ite.edu.sg with web ID and password
3rd Phase (Final Top-up Phase)		
Application	1 st Top-up Phase Application - 11 Jan to 19 Jan 2023 2 nd Top-up Phase Application - 27 Jan to 8 Feb 2023	Apply through the Internet at https://istudent.ite.edu.sg with NRIC / FIN and Date of Birth. You may also apply using SingPass.
Release of Results	1 st Top-up Phase - 16 Jan to 27 Jan 2023 2 nd Top-up Phase - 27 Jan to 14 Feb 2023	Check results at https://istudent.ite.edu.sg with web ID and password
Acceptance of Course Offer Period	1 st Top-up Phase - 16 Jan to 27 Jan 2023 2 nd Top-up Phase - 27 Jan to 14 Feb 2023	Accept course offer at https://istudent.ite.edu.sg with web ID and password

Information For Students on Key Dates for Jan 2023 intake

1. All N(A)* / N(T) school leavers are encouraged to put in an application during the **1st Phase (Main Phase)** between **19 Dec 2022 (2.30pm) to 22 Dec 2022 (5pm)**. Application results for the 1st Phase will be released on **30 Dec 2022 at 9am**.
2. If you wish to appeal, please accept the course offered **before** applying in the **2nd Phase (Late Application/Appeal Phase)** between **30 Dec 2022 to 4 Jan 2023**. The application results for the 2nd Phase will be known on **11 Jan 2023 at 9am**.
3. Unsuccessful applicants can appeal under the **3rd Phase (Final Top-up Phase)** between **11 Jan to 19 Jan 2023 and 27 Jan to 8 Feb 2023** for courses with vacancies. The application results for the 3rd Phase will be known between **16 Jan to 27 Jan 2023** and **27 Jan to 14 Feb 2022**.

*N(A) students progressing to ITE

For further enquiries, N-Level school leavers can contact
ITE Hotline: 1800-2222-111



Key Pointers for Students on ITE's Joint Intake Exercise (JIE) for Admission to Nitec Courses

ALL N(T) students and N(A) students (who are not progressing to 5N(A) or repeating 4N(A)) are eligible for JIE.

Keen competition for Nitec and Higher Nitec courses, so use all 12 choices wisely!

Participation in Main Phase is key to secure a place in ITE!

If you are keen in the work & learn option, you may consider applying for the ITE Traineeship programme. Do apply in the Main Phase to avoid missing a place in ITE!

If you are unsuccessful in EAE, make sure you apply in Main Phase to avoid missing a place!

If you have received an additional letter, then you are eligible for the 3-year Nitec Programme (eNFP).

If you are eligible for eNFP, make sure you apply for the 2-year Nitec and 3-year Higher Nitec first before applying for eNFP!

The eNFP helps to build the necessary literacy and numeracy foundations that will enable you to successfully complete your Nitec course!



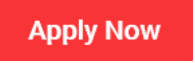
If you are counter-offered a course, accept it first before appealing for another course you may be more interested in!



Online Application for

2-Year Nitec and 3-Year
Higher Nitec Courses

3-Year Nitec Course with eNFP
(for N(T) courses with 0, 1 pass)

1. Go to https://www.ite.edu.sg .	
2. Click  icon.	
3. Under JIE 'N', click  icon to link to the application website	Under JIE 'E', click  icon to link to the application website
4. At the application website: <ol style="list-style-type: none"> Enter NRIC / FIN and Date of Birth to start application. You may also apply using SingPass. Upon completion of application, applicants will receive their web ID and password. 	



Checking of Posting Results/Accept Course Offer

2-Year Nitec and 3-Year
Higher Nitec Courses

3-Year Nitec Course with eNFP
(for N(T) courses with 0, 1 pass)

1. Go to <https://istudent.ite.edu.sg>.
2. Enter **web ID** and password.
3. Click '**Self-Service**' followed by '**Student Admission**' followed by '**View Application Results**' to view the application results and to accept course offer.



Additional Information For Students

The information listed in the table below will help you to make an informed decision on which choice of courses you could consider applying at ITE.

S/N	Information	Attachment/Link
1	ITE Factsheet 2022	 2022 Factsheet
2	ITE Course Booklet 2023	https://www.ite.edu.sg/docs/default-source/full-time-courses-doc/ite-course-booklet-2023
3	ITE Traineeship Course Booklet 2023	https://www.ite.edu.sg/docs/default-source/traineeship/ite-traineeship-e-booklet_2023.pdf
4	Information on Progression Opportunities (From <i>Nitec</i> Courses to <i>Higher Nitec</i> and Technical Diploma Courses)	https://www.ite.edu.sg/admissions/full-time-courses/nitec/progression-opportunities
5	Information on Graduate Employment Survey	https://www.ite.edu.sg/admissions/graduate-employment-survey



The N-Level is not the destination.

It is part of your education journey.

No matter what the results are, you must remember that your results do not determine who you are or how successful you will be in the future!



**ALL THE BEST
FOR YOUR FUTURE!**



Serangoon Garden Secondary School

Established in 1959

Perseverance. Respect. Integrity. Diligence. Empathy