

# Welcome Back!

Serangoon Garden Secondary School  
Class of 2023



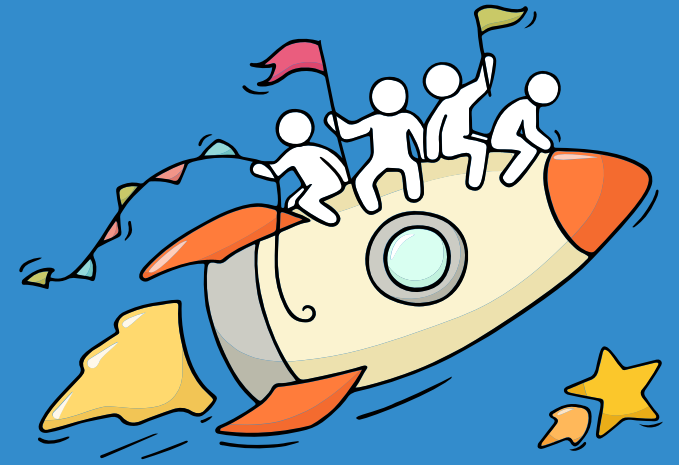
# Celebrate Efforts

The N-Level is a culmination of years of hard work and perseverance.

Let's celebrate our efforts regardless of the results.

Let's mark the end of the academic year by reflecting together on all our previous successes in school and the challenges we have overcome!

Remember that everyone's learning journey is different but we can each have a fulfilling outcome!



REALIZE THAT YOU  
ARE NOT ALONE,  
THAT WE ARE IN THIS  
TOGETHER AND MOST  
IMPORTANTLY THAT  
THERE IS HOPE.

Deepika Padukone



# Thinking about Your Next Step?

Consider these questions!

Where do I want to go?

Who am I?



How Do  
I Get There?

# Resources to help you make informed decisions



## MySkillsFuture Student Portal

A one-stop portal that empowers you to embark on a journey of self-discovery and make informed education and career choices.

Use the information and tools to explore various education and career pathways and take charge of your future.

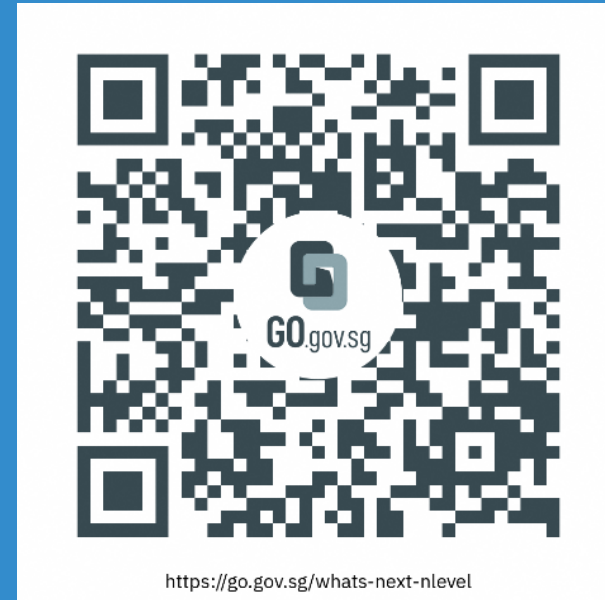
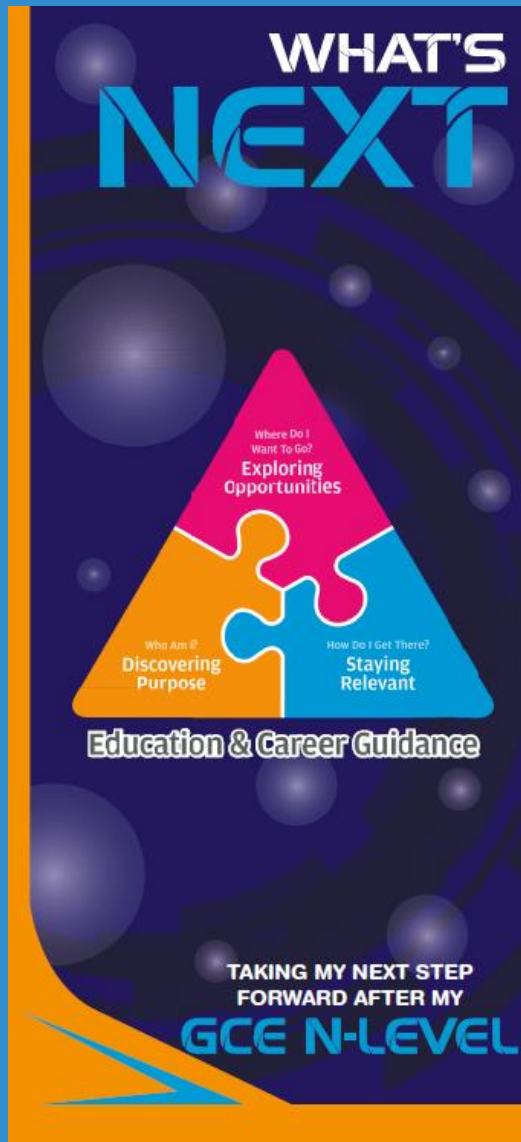
*Where can we find more information?*



<https://go.gov.sg/mySFsec>



# Resources to help you make informed decisions



<https://go.gov.sg/whats-next-nlevel>

# Resources to help you make informed decisions

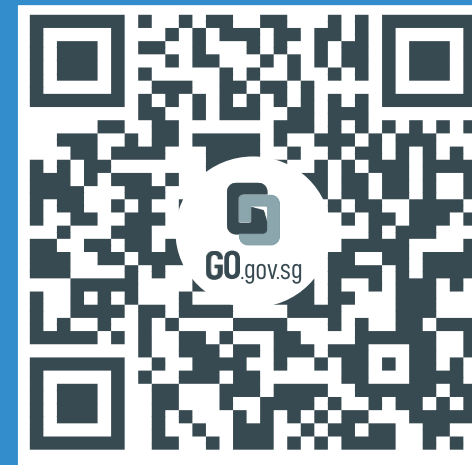
## Post-Secondary Education

Learn more about the admissions exercises and programmes



<https://moe.gov.sg/post-secondary/admissions>

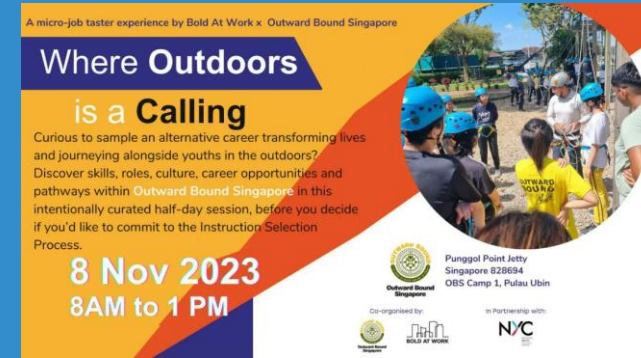
Learn more about the post-secondary education institutions



<https://moe.gov.sg/post-secondary/overview>

# Resources to help you make informed decisions

Explore different jobs and industries with On My Way (OMW). Find out if your career goal and educational pathway match your interests, values and ambitions. <https://www.nyc.gov.sg/omw/home>



## KNOW IT ALL

provides consolidated information about different jobs and industries - key responsibilities, skills, career paths and more!

## DAY IN THE LIFE

takes you into the lives of different professionals and give you a glimpse of their jobs and what it entails through the medium of videos.

## TASTER PROGRAMMES

are micro-experiences of different job roles that allow you to get a taste of working life and help you decide what to study to achieve your career aspirations!



# Concerned about your next steps?

## Stop

- Calm yourself down. Take a few deep breaths.

## Think

- Think through the different options that are available for you. Keep things in perspective.
- Remember that the N-Level is one part of your life journey and not the destination.

## Do

- Approach a trusted adult and seek his/her help. Have a conversation with this person about what would be best for you.
- Make a decision and take action based on your options.

**When you receive your results, you may experience a range of emotions.**

**Managing these emotions well will allow you to stay calm and make rational decisions.**

# Reaching out for help is a sign of strength, not weakness.

If you have any questions about your options or are not coping well, do reach out to someone you trust and speak with them. It could be a parent/guardian, teacher, ECG Counsellor, School Counsellor or a friend that you can talk to.

*Is there  
someone we  
can speak  
with?*



# Support is readily available for you.

## Reach out to an ECG Counsellor!

*Who can we go  
to for ECG  
advice?*

Make an appointment to speak  
with your ECG Counsellor in school.

**OR**

Make an ECG counselling  
appointment via the  
ECG Centre @ MOE (Grange Road)  
at

<https://go.gov.sg/moe-ecg-centre>



# Keep a lookout for some of these signs in your peers or in yourself

*How can we support one another?*



**D**

Deliberately avoiding others

**I**

Increased irritability, restlessness, agitation, stress and anxiety

**S**

Sending or posting moody messages on social media

**T**

Talking about death or dying

**R**

Reacting differently or gradually losing interest in things they used to like

**E**

Eating more than usual or having a much reduced appetite

**S**

Sleep pattern changes with difficulty falling asleep or oversleeping

**S**

Slowing down of energy levels

If you notice any of these signs in yourself or your friends,  
**have a chat with your school counsellor or teacher**  
Or contact SOS 24-hour hotline at **1-767** or **1800-221-4444**



# Supporting Your Friend

We may each experience different emotions upon receiving the results. You can share your friends' joy by congratulating them or give words of encouragement to friends who may be disappointed with their results.



Keep a lookout for your friends in distress. You can support them in the following ways:



# Support is readily available for you.

There are other hotlines and chats available if you are more comfortable seeking help using these platforms. Scan the QR code below for a helpful resource.



**SOS** provides round-the-clock emotional support for those in distress, thinking of suicide or affected by suicide.

Call: **1767**  
**(24-hour helpline)**

Whatsapp: **9151 1767**  
**(24-hour Care Text)**

## Community Health Assessment Team

**(CHAT)** provides personalised and confidential mental health checks and consultation for youths. To speak with a youth support worker, you can:

Visit: **CHAT Hub at \*SCAPE, #05-05**  
Call: **6493 6500/ 6501**  
Email: **CHAT@mentalhealth.sg**

**mindline.sg** is an online platform that provides tools, tips and resources to help you manage your health and well-being. Find out more at:  
[www.mindline.sg](http://www.mindline.sg)



**TOUCHline** is a helpline to provide youths with emotional support and practical advice.

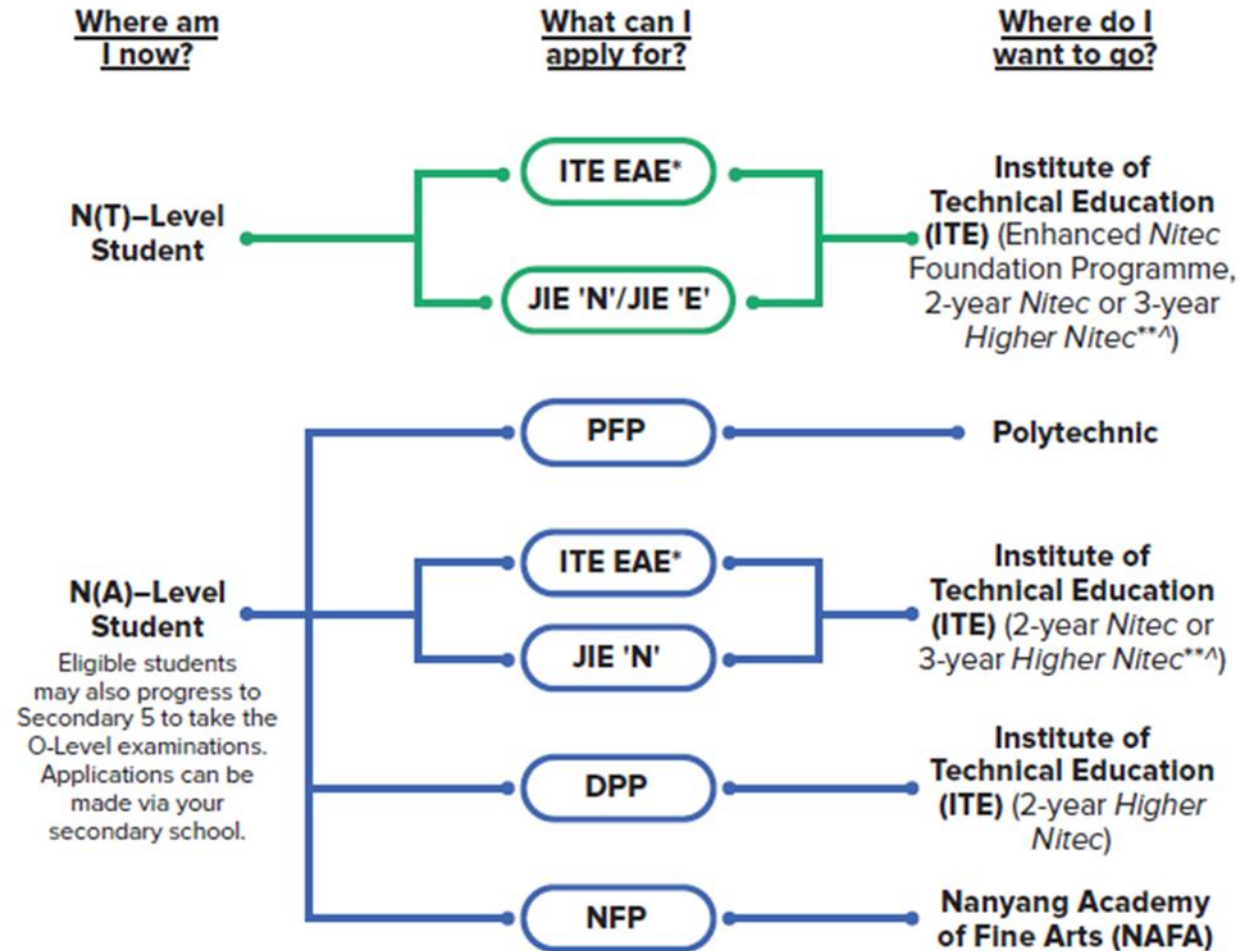
Call: **1800-377 2252**  
*Monday- Friday (Excluding Public Holidays):  
9am – 6pm*

**Carey** is an online platform by Care Corner that provides free mental health check-ins with mental health professionals. Find out more at:  
<https://carey.carecorner.org.sg/>

**eC2** is an e-Counselling Centre where you can talk to a trained counsellor about the issues you are facing, right where you are.

Chat with a counsellor at:  
[www.ec2.sg](http://www.ec2.sg)  
*Monday – Friday (Excluding Public Holidays):  
10am – 12pm & 2pm – 5pm*

## Admissions Exercises for N-Level Students



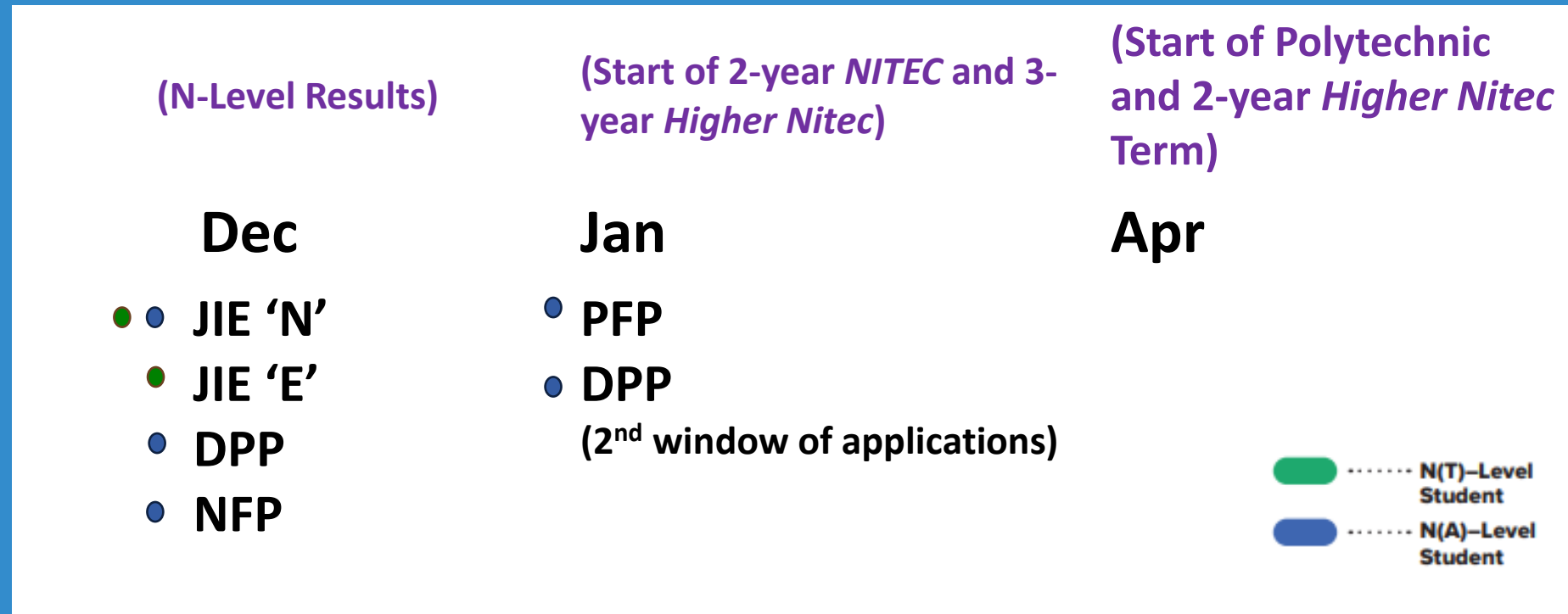
## Multiple Education Pathways

“We will provide our students with a diversity of schools and education pathways, a diversity of skillsets and a diversity of perspectives and experiences.”

*Mr Chan Chun Sing, Minister for Education (16 Aug 2021)*



# Admissions Exercises Application Timeline





# JIE Application

1. Choose your courses wisely. Look at the cut-off points for Higher Nitec / Nitec courses available in the JIE booklet distributed to you.
2. Candidates who wish to apply for courses offered by the Institute of Technical Education (ITE) can submit their applications online via the ITE application portal (<https://www.ite.edu.sg/apply-for-ITE-courses>), between **2.30pm on Monday, 18 December 2023 and 5.00pm on Thursday, 21 December 2023**. Hard copy application forms will also be available at the Customer & Visitor Centres at the three ITE Colleges. Applicants who wish to collect a hard copy application from the Customer & Visitor Centres should book an appointment first by contacting the respective colleges via the email addresses or phone numbers provided at <https://www.ite.edu.sg/who-weare/get-in-touch>.
3. For courses offered under Aptitude-Based Admissions, candidates may check the interview details online via the ITE application portal from **2.00pm on Friday, 22 December 2023**.



# Release of JIE results

1. The ITE posting results will be released at **9.00am on Friday, 29 December 2023**. Candidates may check the posting results online via the ITE application portal.
2. Candidates who receive an ITE offer should log on to the ITE application portal between **9.00am on Friday, 29 December 2023 and 11.59pm on Wednesday, 3 January 2024** to accept or reject the offer.



# DPP (Application)

1. The Direct-Entry-Scheme to Polytechnic Programme (DPP) prepares candidates for progression into selected polytechnic diploma courses via a two-year Higher Nitec course at ITE. Under the DPP, candidates who successfully complete their Higher Nitec course and attain the required minimum qualifying Higher Nitec Grade Point Average are guaranteed a place in a polytechnic diploma course mapped to their Higher Nitec course. School candidates eligible for the DPP will receive a copy of Form N from their secondary schools, inviting them to apply for the DPP.
2. Applications for the DPP can be submitted online via the ITE application portal between **2.30pm on Monday, 18 December 2023 and 5.00pm on Thursday, 21 December 2023.**
3. For more information on the DPP, please visit this website:  
(<https://www.ite.edu.sg/admissions/full-time-courses/higher-nitec-dpp>)



# DPP (Results)

1. The DPP posting results will be released at **2.00pm on Friday, 22 December 2023**. Candidates may check the posting results online via the ITE application portal.
2. Candidates who receive a DPP offer should log on to the ITE application portal between **2.00pm on Friday, 22 December 2023 and 11.59pm on Wednesday, 27 December 2023** to accept or reject the DPP offer.



# Polytechnic Foundation Programme (PFP)

1. The Polytechnic Foundation Programme (PFP) is a diploma-specific foundation programme conducted over two academic semesters at the polytechnics. It caters to candidates in the N(A) course who have decided to pursue a polytechnic education and meet the PFP eligibility requirements at the end of Secondary 4.
2. School candidates interested in applying for the PFP should first report to their secondary schools in 2024 to start their Secondary 5 year, while awaiting notification of eligibility and confirmation of a place in the PFP.
3. Applications for the PFP will open in January 2024, on the day of the GCE Ordinary-Level (O-Level) Examinations results release. Candidates eligible for the PFP will receive a copy of Form P on the same day, inviting them to apply for the PFP.
4. For more information on the PFP, please visit this website:  
(<https://pfp.polytechnic.edu.sg/PFP/index.html>)



# Appeal for review of results

1. The closing date for submission of appeal(s), including payment of appeal fees is **by Friday, 22 December 2023.**
2. The appeal fees (inclusive of GST) per subject is **\$112.35 for Singapore Citizens, \$113.40 for Singapore Permanent Residents and International Students**
3. Applications submitted after the closing date will not be considered.



# Additional Support for Students

| Type                       | Notes   |
|----------------------------|---|
| Computer access            | V Hub,<br>Mon till Thu, 21 Dec,<br>from 8.30 am – 4.30 pm,<br>Register with security first and then inform Mdm Rohana at<br>General Office counter before going up to V Hub |
| ECG Counsellor             | V Hub, Tuesday,<br>from 8.30 am – 4.30 pm   |
| Any other support required | Message FTs or Mr Wong first  |



# Key Dates for Jan 2024 Intake Exercise (Full-time Nitec Courses)

| Key Activity                                     | Period for 2-Year and 3-Year Nitec Courses, and 3-Year and 4-year Higher Nitec courses  | Remarks   |
|--|---|---|
| <b>1st Phase (Main Phase)</b>                    |   |   |
| Application                                      | 18 Dec 2023 (2.30pm) to 21 Dec 2023 (5pm)   | Apply through the Internet at <a href="https://www.ite.edu.sg">https://www.ite.edu.sg</a> with NRIC / FIN and Date of Birth. You may also apply using SingPass.           |
| Release of Results                               | 29 Dec 2023 at 9am  | Check results at <a href="https://istudent.ite.edu.sg">https://istudent.ite.edu.sg</a> with web ID and password   |
| Acceptance of Course Offer Period                | 29 Dec 2023 to 3 Jan 2024   | Accept course offer at <a href="https://istudent.ite.edu.sg">https://istudent.ite.edu.sg</a> with web ID and password   |
| <b>2nd Phase (Late Application/Appeal Phase)</b> |   |   |
| Application                                      | 29 Dec 2023 to 3 Jan 2024   | Apply through the Internet at <a href="https://istudent.ite.edu.sg">https://istudent.ite.edu.sg</a> with NRIC / FIN and Date of Birth. You may also apply using SingPass. |
| Release of Results                               | 10 Jan 2024 at 9am  | Check results at <a href="https://istudent.ite.edu.sg">https://istudent.ite.edu.sg</a> with web ID and password   |
| Acceptance of Course Offer Period                | 10 Jan 2024 to 12 Jan 2024  | Accept course offer at <a href="https://istudent.ite.edu.sg">https://istudent.ite.edu.sg</a> with web ID and password   |
| <b>3rd Phase (Final Top-up Phase)</b>            |   |   |
| Application                                      | 1 <sup>st</sup> Top-up Phase Application - 10 Jan to 18 Jan 2024<br>2 <sup>nd</sup> Top-up Phase Application - 24 Jan to 7 Feb 2024 | Apply through the Internet at <a href="https://istudent.ite.edu.sg">https://istudent.ite.edu.sg</a> with NRIC / FIN and Date of Birth. You may also apply using SingPass. |
| Release of Results                               | 1 <sup>st</sup> Top-up Phase - 15 Jan to 24 Jan 2024<br>2 <sup>nd</sup> Top-up Phase - 24 Jan to 14 Feb 2024                        | Check results at <a href="https://istudent.ite.edu.sg">https://istudent.ite.edu.sg</a> with web ID and password   |
| Acceptance of Course Offer Period                | 1 <sup>st</sup> Top-up Phase - 15 Jan to 24 Jan 2024<br>2 <sup>nd</sup> Top-up Phase - 24 Jan to 14 Feb 2024                        | Accept course offer at <a href="https://istudent.ite.edu.sg">https://istudent.ite.edu.sg</a> with web ID and password   |

Jan 2024 Intake Term Commencement Date: **8 Jan 2024**



# Information For Students on Key Dates for Jan 2024 intake

## For all students progressing to ITE

1. All N(A) students (except PFP bound) /N(T) school leavers are encouraged to put in an application during the **1<sup>st</sup> Phase (Main Phase)** between **18 Dec 2023 (2.30pm) to 21 Dec 2023 (5pm)**. Application results for the 1<sup>st</sup> Phase will be released on **29 Dec 2023 at 9am**.
2. If you wish to appeal, please accept the course offered **before** applying in the **2<sup>nd</sup> Phase (Late Application/Appeal Phase)** between **29 Dec 2023 to 3 Jan 2024**. The application results for the 2<sup>nd</sup> Phase will be known on **10 Jan 2024 at 9am**.
3. Unsuccessful applicants can appeal under the **3<sup>rd</sup> Phase (Final Top-up Phase)** between **10 Jan to 18 Jan 2024 and 24 Jan to 7 Feb 2024** for courses with vacancies. The application results for the 3<sup>rd</sup> Phase will be known between **15 Jan to 24 Jan 2024** and **24 Jan to 14 Feb 2024**.

For further enquiries, N-Level school leavers can contact  
ITE Hotline: 1800-2222-111



# Key Pointers for Students on ITE's Joint Intake Exercise (JIE) for Admission to Nitec Courses

ALL N(T) students and N(A) students (who are not progressing to 5N(A) or repeating 4N(A)) are eligible for JIE.

Keen competition for Nitec and Higher Nitec courses, so use all 12 choices wisely!

Participation in Main Phase is key to secure a place in ITE!

If you are keen in the work & learn option, you may consider applying for the ITE Traineeship programme. Do apply in the Main Phase to avoid missing a place in ITE!

If you are unsuccessful in EAE, make sure you apply in Main Phase to avoid missing a place!

If you have received an additional letter, then you are eligible for the Enhanced Foundation Programme.

If you are eligible for EFP, make sure you apply for the 2-year Nitec and 3-year Higher Nitec first before applying for EFP!

The EFP helps to build the necessary literacy and numeracy foundations that will enable you to successfully complete your Nitec course!

If you are counter-offered a course, accept it first before appealing for another course you may be more interested in!




## STEP-BY-STEP INFORMATION FOR JIE APPLICATION

# Online Application for


2-Year Nitec and 3-Year  
Higher Nitec Courses

3-Year Nitec/4-year Higher Nitec  
Course with EFP  
(for N(T) courses with 0, 1 pass)

1. Go to <https://www.ite.edu.sg>.

2. Click  icon.

3. Under JIE 'N', click  icon to link to the application website

Under JIE 'E', click  icon to link to the application website

4. At the application website:

- a) Enter NRIC / FIN and Date of Birth to start application. You may also apply using SingPass.
- b) Upon completion of application, applicants will receive their **web ID** and password.



## STEP-BY-STEP INFORMATION FOR JIE APPLICATION

# Checking of Posting Results/Accept Course Offer

2-Year Nitec and 3-Year  
Higher Nitec Courses

3-Year Nitec/4-year Higher Nitec  
Course with EFP  
(for N(T) courses with 0, 1 pass)

1. Go to <https://istudent.ite.edu.sg>.
2. Enter **web ID** and password.
3. Click '**Self-Service**' followed by '**Student Admission**' followed by '**View Application Results**' to view the application results and to accept course offer.



## RESOURCES FOR STUDENTS

# Additional Information For Students

Should you require further advice or assistance in your applications or future plans, please contact your teachers and ECG Counsellor.


For further inquiries, you may refer to the following hotlines and links for more information and advice on further education:

| Institute of Technical Education (ITE)          |   |
|---|---|
| ITE Hotline<br>(for ITE admissions and courses) | 1800 2222 111<br><a href="mailto:training@ite.edu.sg">training@ite.edu.sg</a>   |
| Education and Career Guidance (ECG)             |   |
| ECG Centre @ MOE                                | <u>6831 1420</u><br><a href="mailto:MOE_ECG@moe.gov.sg">MOE ECG@moe.gov.sg</a><br>e-Appointment:<br><a href="https://go.gov.sg/moe-ecg-centre">https://go.gov.sg/moe-ecg-centre</a> |



# Additional Information For Students

The information listed in the table below will help you to make an informed decision on which choice of courses you could consider applying at ITE.

| S/N | Information   | Attachment/Link   |
|-----|---|---|
| 1   | ITE Factsheet 2023  | <br>JIEN2023<br>Factsheet  |
| 2   | ITE Course Booklet 2024   | <a href="https://for.edu.sg/ite-course-booklet-2024">https://for.edu.sg/ite-course-booklet-2024</a>   |
| 3   | ITE Traineeship Courses   | <a href="https://www.ite.edu.sg/courses/traineeship-courses">https://www.ite.edu.sg/courses/traineeship-courses</a> .   |
| 4   | Information on Progression Opportunities (From <i>Nitec</i> Courses to <i>Higher Nitec</i> and Technical Diploma Courses) | <a href="https://www.ite.edu.sg/admissions/full-time-courses/nitec/progression-opportunities">https://www.ite.edu.sg/admissions/full-time-courses/nitec/progression-opportunities</a> |
| 5   | Information on Graduate Employment Survey   | <a href="https://www.ite.edu.sg/admissions/graduate-employment-survey">https://www.ite.edu.sg/admissions/graduate-employment-survey</a>   |



The N-Level is not the destination.

It is part of your education journey.

No matter what the results are, you must remember that your results do not determine who you are or how successful you will be in the future!



**ALL THE BEST  
FOR YOUR FUTURE!**



**Serangoon Garden Secondary School**

*Established in 1959*

**Perseverance. Respect. Integrity. Diligence. Empathy**