

National Digital Literacy Programme Briefing for Parents

Mr Leslie Tan
HOD ICT



Serangoon Garden Secondary School
Established in 1959

Perseverance. Respect. Integrity. Diligence. Empathy

The National Digital Literacy Programme (NDLP)

Through the NDLP, all secondary school students will **own a school-prescribed personal learning device (PLD)** by end 2021, Singapore Citizen students can use their **Edusave Account to pay for the PLD.**

The device will be used to facilitate an environment that **encourages personalised learning.**



Serangoon Garden Secondary School

Established in 1959

Perseverance. Respect. Integrity. Diligence. Empathy

Intended Outcomes of a Personalised Learning Environment

The use of the Personal Learning Device for teaching and learning aims to:



Enhance Teaching and Learning



Support the Development of Digital Literacies



Support self-directed and collaborative learning



Serangoon Garden Secondary School
Established in 1959

Perseverance. Respect. Integrity. Diligence. Empathy

Learning with a Personal Learning Device: Our Programmes



Serangoon Garden Secondary School
Established in 1959

Perseverance. Respect. Integrity. Diligence. Empathy

How will your child use the Personal Learning Devices?



Self-Directed Learning



Collaborative Learning



Online Presentations



Online Interviews



Serangoon Garden Secondary School
Established in 1959

Perseverance. Respect. Integrity. Diligence. Empathy

Infusion of Active Learning with Technology

Learning Anywhere, Anytime

ACTIVITY 1- TAKE A POSITION

Activity Instructions:

- 1) **Read and watch** the sources below. Look out for the actions of the three central figures in the crisis that led to increased tensions during the Cuban Missile Crisis.
- 2) **State your position** and **elaborate** in the interactive thinking tool.

Feature #1: Interactive Thinking Routines

INTERACTIVE THINKING TOOL 1

From the sources, who do you think is responsible for increasing tensions during the Cuban Missile Crisis?

What makes you say that?

Activating prior knowledge by showing the students multimodal sources and allowing them to take a position and to explain their point of view based on their current understanding

KUMARAN SAKTHIVEL

It's because the USA officers were ready to launch the war but because of one officer, the whole war was neglected. USA was fearful of the missiles placed in Cuba as it could attack usa anytime.

Write a comment

Add comment here...

BRYAN LUM HONG JUN

it all started when usa decided to assassinate the leader of cuba which is called bay of invasion . thus , castro had no choice but to seek for ussr help for the defense . while ussr agree to castro as the ussr will gain a upper hand as they get to plant missiles in cuba to threaten the usa to remove the jupiter missile in turkey , then usa

View more

TEO SIOW MIN GLENDA

usa because usa did the naval blockade and did not chose to deal with ussr's missiles by negotiating with kruschchov not only that but they were all only focusing on getting into war. like preparing for war and preparing an invasion which will result in another world war which i'll be started by usa this time round . moreover ,

View more

The screenshot shows a mobile application interface for "3 Diligence - Sprint Record". The app has a dark blue background with a grid of four panels. The top panel is titled "Instructions" and lists three steps: 1. Submit a video of your starts and sprints. 2. Record the timing of your run in your post. 3. Use the crouch start or sprint check list to reflect on what you do to improve in the comments section of your post. The second panel is titled "Team Potato" and shows a video of Donovan running with a timing of 00:05:78. The third panel is titled "Team Mama" and shows a video of Michelle running with a timing of 00:06:04. The fourth panel is titled "Baby Girls" and shows a video of Jacques run with a timing of 00:07:7. The bottom panel is titled "Help Resources:" and contains a link to a PE Repository for Students - Google Drive. The app also displays a large digital timer showing 00:04.99.

Infusion of Active Learning with Technology

Google Mail/Suite/Classroom

Google Classroom

- Sec 3 NPCC Home Based Learning**
11 students
- 1 Respect 2020**
36 students
1 RESPECT Maths
- 3 Compassion SBB**
15 students
3 COMPASSION MATHS
- 3 Wisdom 2020**
15 students
3 Wisdom Maths
- 4E_Mrs Lee**
23 students
GOAL

Chapter 9: Congruenc... ..

- HBL 17 June_Congruence and Similarity**
Posted 16 Jun, 3:46 PM
- HBL 16 June_Congruence and Similarity**
Posted 15 Jun, 4:51 PM
- Chapter 9_16 and 17 June_Notes**
Posted 15 Jun, 11:25 AM

Chapter 8: Arc Length,... ..

- Standardised Homework 8-1**
Posted 12 Jun, 5:38 PM
- Standardised Homework 8-2**
Posted 12 Jun, 5:42 PM
- 8.1 & 8.2 Arc Length and Area Sector (Using d...**
Posted 1 Jun, 8:12 PM

Chapter 7: Application... ..

- 7.3 3D Problems_4 May**
Posted 4 May, 8:03 AM
- 7.2 Bearings 27_28th April**
Posted 27 Apr, 8:01 AM

Responsible Usage of Devices



Serangoon Garden Secondary School
Established in 1959

Perseverance. **R**espect. **I**ntegrity. **D**iligence. **E**mpathy

Supporting Students in the Responsible Use of the Devices

The school has in place measures **to enable a safe and seamless learning environment for students.** The role of the parent is also key in partnering the school to support your child.

- A. Educating students on Cyber Wellness
- B. Device Management Application (DMA)
- C. Acceptable Use Policy (AUP)



Serangoon Garden Secondary School
Established in 1959

Perseverance. Respect. Integrity. Diligence. Empathy

Cyber Wellness Education

A. Educating students on Cyber Wellness

MOE has made significant changes to the Character and Citizenship Education. Cyber Wellness lessons will feature significantly in the CCE2021 lessons.



Serangoon Garden Secondary School
Established in 1959

Perseverance. Respect. Integrity. Diligence. Empathy

Cyber Wellness Education

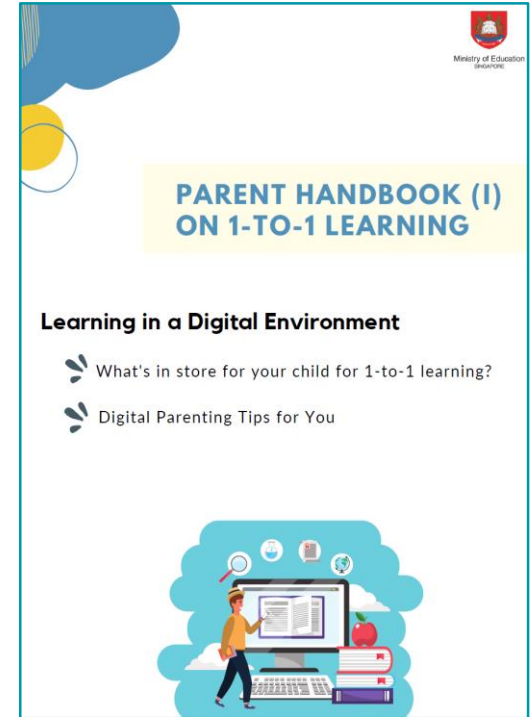
As parents, you also play an important part.

- Model good digital habits for your child.
- Know your child well, and have conversations with your child about safe and responsible use of technology.
- Set ground rules for internet use.
- Navigate the internet together to understand their usage.



Serangoon Garden Secondary School
Established in 1959

Perseverance. Respect. Integrity. Diligence. Empathy



Supporting Students in the Responsible Use of the Devices

B. Device Management Application

Device management application (DMA) software will be installed on your child's device to provide a safe learning experience for your child, and to prevent misuse of the device.

The DMA will be **funded by MOE** and will be **uninstalled** from the device **when the child graduates/ leaves the school.**



Serangoon Garden Secondary School

Established in 1959

Perseverance. Respect. Integrity. Diligence. Empathy

Supporting Students in the Responsible Use of the Devices

C. Acceptable Use Policy (AUP)

Parents can refer to the AUP when helping to manage his/her child's use of the PLD. The AUP will help your child to **understand the expectations of device use to enable a conducive learning environment.**

It also **outlines the consequences** for violating the policy.



Serangoon Garden Secondary School

Established in 1959

Perseverance. Respect. Integrity. Diligence. Empathy

Acceptable Use Policy (AUP)

Key Points to Note:

- Students are to ensure their PLDs are fully charged before bringing it to school.
- Students are responsible and accountable for all activities conducted via their own account.
- The AUP needs to be signed by both the parent and child.

Acceptable Use Policy (AUP) Agreement Serangoon Garden Secondary School (With students using personal devices)

Dear Student,

Computing devices and access to the Internet have become a necessity for work, play and learning in the 21st century. In order to ensure a safe and conducive learning environment, please abide by the rules stated in this Acceptable Use Policy Agreement.

This policy applies to all students in this school and the use of our school's ICT facilities, equipment and resources, as well as users' personal devices (e.g. mobile phones). ICT facilities, equipment and resources include the following, but are not limited to, school's internet network, IT Lab, hardware (e.g. laptops, tablets, computers), software (e.g. school's learning management system, productivity software, online tools) and peripherals (e.g. projector, scanner, camera).

General

1. Users are responsible for their personal devices. The school will not be held responsible for any damage, theft or loss of their devices. In the event of loss or theft of devices, users must make a police report and report the matter to the school.
2. Users should bring their personal devices home with them at the end of every school day.
3. Users should not use the school's electrical power to charge their own personal devices. Users should ensure that their personal devices are fully charged before bringing it to school.
4. Users' personal devices are installed with device management software. When enrolled, the software will manage users' device usage based on

Device Information



Serangoon Garden Secondary School
Established in 1959

Perseverance. **R**espect. **I**ntegrity. **D**iligence. **E**mpathy

SGS Personal Learning Device

Acer TravelMate Spin B3

Operating System

Windows 10

Screen

11.6" Touchscreen*

CPU

Pentium Quad Core N6000*

RAM

8GB*

Storage

128GB

Productivity

Active Stylus*, Student ICON,
MS Office 365 Pro Plus,
Google Classroom

Weight

1.4 kg

Battery Life

12 hrs

Warranty & Insurance

3 Years*

* School Upgraded Components



Total Cost with GST: \$628.09

Personal Learning Device Bundle

Items included

- Acer TravelMate Spin B3 Laptop
- Mouse
- Active Stylus
- Slim Sleeve



Serangoon Garden Secondary School
Established in 1959

Perseverance. Respect. Integrity. Diligence. Empathy

Warranty Coverage

The PLD bundle includes 3 years of warranty and insurance coverage.

Technical support will be provided to students

- Service-desk set up in school after school on a weekly basis
 - ✓ Trouble-shooting of device issues
 - ✓ Solve connectivity issues
 - ✓ Collection of devices to be sent for repairs
- ACER Singapore service centre
 - ✓ Repair of devices (hardware issues)



Serangoon Garden Secondary School
Established in 1959

Perseverance. Respect. Integrity. Diligence. Empathy

Insurance Coverage

Insurance Coverage	Claimable
<ul style="list-style-type: none">● Fire● Lightning● Power Surges● Accidental* e.g water spillage, drop etc● Theft due to forcible entry● Robbery <p>* Accidental loss is not covered by insurance</p>	2 repairs or 1 replacement



Funding Information



Serangoon Garden Secondary School
Established in 1959

Perseverance. Respect. Integrity. Diligence. Empathy

Funding Support for Singapore Citizen (SC) Students

- **The cost of the device bundle can be paid using your child's Edusave account**, after setting aside provision for payment of second-tier miscellaneous fees.
- To ensure the affordability of devices, **there was a one-time Edusave top-up of \$200 in April 2020** to support the purchase of the device
- This is on top of the **annual \$290** credited into the Edusave account for Secondary School students.



Serangoon Garden Secondary School

Established in 1959

Perseverance. Respect. Integrity. Diligence. Empathy

Funding Support for Singapore Citizen (SC) Students

- All MOE-FAS and School-Based FAS students will qualify for additional subsidy without the need to apply. The cash out-of-pocket will be \$0.
- Subsidies will be provided for SC who need support, particularly those whose Gross Household Income (GHI) is below \$4,000 or Per Capita Income (PCI)# is below \$1,000.
- For more details on financial assistance, please approach the school.



Serangoon Garden Secondary School

Established in 1959

Perseverance. Respect. Integrity. Diligence. Empathy

Permanent Residents / International Students



**Acer TravelMate
Spin B3**

Student A GHI > \$4,000 or PCI > \$1,000	
Device Bundle Cost	\$628.09
Cash Out-of-pocket	\$628.09

For more details on financial assistance, please approach the school. Each student would receive a personalised bill subsequently.



Serangoon Garden Secondary School
Established in 1959

Perseverance. Respect. Integrity. Diligence. Empathy

Funding Support for Non-Singapore Citizen Students

- Permanent residents (PR) and international students (IS) who need support could apply for subsidies, particularly those whose Gross Household Income (GHI) is below \$4000 or Per Capita Income (PCI)* is below \$1000.
- If your child qualifies for the subsidy, please submit Annex D “Application for Subsidy for PLD”

*PCI is GHI divided by the number of household members.



Serangoon Garden Secondary School

Established in 1959

Perseverance. Respect. Integrity. Diligence. Empathy

Subsidy for Permanent Residents/International Students



**Acer TravelMate
Spin B3**

	Student B GHI \leq \$2,750 or PCI \leq \$690	Student C \$2,750 < GHI \leq \$4,000 or \$690 < PCI \leq \$1,000
Device Bundle Cost	\$628.09	\$628.09
Subsidy	30% of device cost \$188.40 (rounded up to nearest 10 cents)	20% of device cost \$125.60 (rounded up to nearest 10 cents)
Cash Out-of-pocket	\$439.69	\$502.49

For more details on financial assistance, please approach the school.
Each student would receive a personalised bill subsequently.



Serangoon Garden Secondary School
Established in 1959

Perseverance. Respect. Integrity. Diligence. Empathy

What's Next



Serangoon Garden Secondary School
Established in 1959

Perseverance. Respect. Integrity. Diligence. Empathy

Under Next Steps to Purchase PLD (Annex A-3)

Annex A-3

By early Jan, parents would have received a letter from the school via Parents' Gateway or hardcopy with details about the PDLP.

For submission by 8 Feb

- A. Intent to Purchase PLD
- B. Edusave Withdrawal (for SC only)
- C. Authorisation to collect PLD
- D. Application for Subsidy (PR/IS)

SC: go.gov.sg/sgspdip

PR/IS: [Hardcopy submission](#)

Important: Next Steps to Purchase the PLD

9. Based on your child's / ward's current Edusave balance, if you agree to purchase the PLD bundle using your child's/ward's Edusave, the balance amount which you need to top up in cash is 0.

10. To proceed with the purchase of the PLD, please fill in the online form at this link: <https://go.gov.sg/sgspdip> by 8 February 2021. The online form will consist:

- (a) **Intent to Purchase.** For parents/guardians to indicate intent to purchase the PLD.
- (b) **Use of Edusave (for Singapore Citizens only).** For parents/guardians who have opted to use their child's/ward's Edusave to pay for the PLD bundle.
- (c) **Collection of PLD (if purchasing).** For parents/guardians to authorise their child/ward or an adult to collect the device on their behalf. You may appoint your child/ward to collect the PLD as the Vendor will run through a device checklist with the students at the point of collection to ensure that the device is in good working condition.

11. If you are unable to submit the form online, please contact your child's Form Teacher for a hardcopy of the form.

Further Queries

12. Should there be any further queries or clarification, please contact [Mr Leslie Tan](#) HOD/ICT at 6288 9227 or via email at leslie_yc_tan@moe.edu.sg. Thank you.

*** Please contact the school if you require a hardcopy of the letter**

What's Next

For Singapore Citizens

Time Frame	Activity
End Jan	Parental Consent for Purchase and Edusave Withdrawal*
End Mar	Collection of Devices

* Parents Gateway / Hardcopy letter would be used to convey information and to facilitate the purchase.



Serangoon Garden Secondary School
Established in 1959

Perseverance. Respect. Integrity. Diligence. Empathy

What's Next

For Permanent Residents (PR) / International Students (IS)

Time Frame	Activity
End Jan	Parental Consent for Purchase
Upon receiving School Bill (end Feb)	Payment via Giro / PayNow / AXS / Cheque
End Mar	Collection of Devices

* Parents Gateway / Hardcopy letter would be used to convey information and to facilitate the purchase.



Serangoon Garden Secondary School
Established in 1959

Perseverance. Respect. Integrity. Diligence. Empathy

Collection of Devices

Your child/ward will be collecting his/her devices in end March.

- Students are highly encouraged to collect the laptop as they will need to set it up using their student account details.

Authorisation Form

Important Note: The computing device must be checked at the point of collection to verify that it is in good working condition. Accordingly, parents/guardians who are concerned that their child/ward will not be able to properly verify the condition of the computing device should **not** authorise their child/ward as their proxy and instead arrange to either collect the computing device personally or appoint an adult proxy. Please note that once the proof of receipt is signed, the risk of loss or damage to the computing device, and title to the computing device, will be passed to you.

I, Parent/Guardian* of _____ (name of child/ward*) of class _____, authorise _____ ("Proxy") to collect the Personal Learning Device (PLD) issued under the Personalised Digital Learning Programme (PDL) on my behalf.

I am aware that the Vendor issuing the computing device will run through a device check list with my Proxy. The check list will detail what my Proxy should look out for when collecting the computing device to verify that it is in good working condition.

I authorise my Proxy to check the computing device on my behalf and thereafter sign the proof of receipt on my behalf to confirm that the computing device is in good working condition.

Name of Parent/Guardian*

Date

Signature

* Please delete as appropriate.



Serangoon Garden Secondary School
Established in 1959

Perseverance. Respect. Integrity. Diligence. Empathy

Important Contacts/ Helplines

To access/find out more about...	Contact/Helpline
This deck of slides	www.sgs.edu.sg/pdlp
Edusave Balance	6260 0777
Financial assistance	Ms Teresa Ng, Admin Manager teresa_ng@schools.gov.sg
PDLP	Mr Leslie Tan, HOD/ICT leslie_yc_tan@moe.edu.sg



Serangoon Garden Secondary School

Established in 1959

Perseverance. Respect. Integrity. Diligence. Empathy

THANK YOU



Serangoon Garden Secondary School
Established in 1959

Perseverance. Respect. Integrity. Diligence. Empathy